



### Exercise 2A

Musical score for Exercise 2A, measures 56-68. The score is written in treble clef with a key signature of one flat (B-flat). It consists of four staves of music. Measures 56-57 show a sequence of eighth notes with slurs, followed by a quarter rest and a dotted quarter note. Measures 58-59 continue the eighth-note sequence with slurs, followed by a quarter rest and a dotted quarter note. Measures 60-61 show a sequence of eighth notes with slurs, followed by a quarter rest and a dotted quarter note. Measures 62-63 continue the eighth-note sequence with slurs, followed by a quarter rest and a dotted quarter note. Measures 64-65 show a sequence of eighth notes with slurs, followed by a quarter rest and a dotted quarter note. Measures 66-67 continue the eighth-note sequence with slurs, followed by a quarter rest and a dotted quarter note. Measure 68 shows a sequence of eighth notes with slurs, followed by a quarter rest and a dotted quarter note.

### Exercise 2B

Musical score for Exercise 2B, measures 71-83. The score is written in treble clef with a key signature of one flat (B-flat). It consists of four staves of music. Measures 71-72 show a sequence of eighth notes with slurs, followed by a quarter rest and a dotted quarter note. Measures 73-74 continue the eighth-note sequence with slurs, followed by a quarter rest and a dotted quarter note. Measures 75-76 show a sequence of eighth notes with slurs, followed by a quarter rest and a dotted quarter note. Measures 77-78 continue the eighth-note sequence with slurs, followed by a quarter rest and a dotted quarter note. Measures 79-80 show a sequence of eighth notes with slurs, followed by a quarter rest and a dotted quarter note. Measures 81-82 continue the eighth-note sequence with slurs, followed by a quarter rest and a dotted quarter note. Measure 83 shows a sequence of eighth notes with slurs, followed by a quarter rest and a dotted quarter note.

*Exercise 3A*

Musical score for Exercise 3A, measures 86-98. The score is written in treble clef with a key signature of one flat (B-flat). The music consists of four staves. Measures 86-90 show a sequence of eighth-note patterns with slurs and ties. Measures 91-94 continue with similar eighth-note patterns, including some sixteenth-note runs. Measure 95 features a half-note rest followed by a half-note chord. Measure 96 has a half-note rest followed by a half-note chord. Measure 97 has a half-note rest followed by a half-note chord. Measure 98 has a half-note rest followed by a half-note chord, ending with a double bar line.

*Exercise 3B*

Musical score for Exercise 3B, measures 101-111. The score is written in treble clef with a key signature of one flat (B-flat). The music consists of four staves. Measures 101-104 show a sequence of eighth-note patterns with slurs and ties. Measures 105-108 continue with similar eighth-note patterns, including some sixteenth-note runs. Measures 109-111 feature a sequence of eighth-note patterns with slurs and ties, ending with a half-note chord in measure 111.

*Exercise 4*

Musical score for Exercise 4, measures 116-120. The score is written in treble clef with a key signature of one flat (B-flat). The music consists of two staves. Measures 116-119 show a sequence of chords and eighth-note patterns with slurs and ties. Measure 120 continues with a similar pattern, ending with a half-note chord.

*Exercise 5*

Young Players may play only the circle note for this Exercise.

124

3 3 5 5

128

3 3 5 5

132

3 3 5 5

136

3 3 5 5

140

3 3 5 5

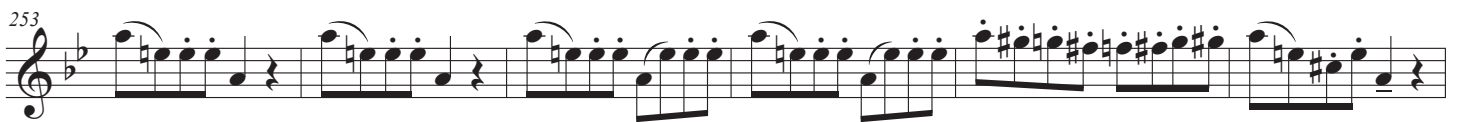
144

3 3 5 5

148

3 3 5 5



*Exercise 6*

*Exercise 7*

265

269

Exercise 7 consists of two staves of music. The first staff, starting at measure 265, features a sequence of eighth notes with stems pointing up, followed by a series of eighth notes with stems pointing down. The second staff, starting at measure 269, contains a series of eighth notes with stems pointing up, followed by a series of eighth notes with stems pointing down. Both staves are in a key signature of one flat and a 2/4 time signature.

*Exercise 8*

273

279

285

291

Exercise 8 consists of four staves of music. Each staff begins with a measure number: 273, 279, 285, and 291. The music is written in a key signature of one flat and a 2/4 time signature. The first two staves (measures 273-285) feature a sequence of eighth notes with stems pointing up, followed by a series of eighth notes with stems pointing down. The last two staves (measures 285-291) feature a sequence of eighth notes with stems pointing up, followed by a series of eighth notes with stems pointing down. The notation includes various articulations such as slurs and accents.

